



BALKAN STEEL I.E.

Grupacija firmi u BiH / Group of companies in BH

UNIS Fabrika cijevi Derventa / UNIS Tube Factory Derventa
Luka Šamac / Port Samac



**KATALOG
PROIZVODA**

**PRODUCT
CATALOGUE**



• Identitet kompanije		2
Balakan Steel I.E. istorija		4
Naša vizija		6
Naša misija		6
Korporativne vrijednosti		6
• UNIS Fabrika cijevi Derventa		7
Istorija UNIS-a		8
Investicije i kapacitet proizvodnje		9
• Pogon proizvodnje cijevi		10
Kvadratne cijevi		10
Pravougaone cijevi		12
Okrugle i okrugle precizne cijevi		14
Srednje teške crne colovske cijevi		16
Ovalne - elipsoidne cijevi		17
Zatvoreni 'D' profil cijevi		17
ZP profili		18
Precizno hladno valjane cijevi malih prečnika		19
Standard pakovanja cijevi		20
• Pogon prerade cijevi		22
Građevinski podupirači i tronošci		22
Ramovska skela		23
Plastenici		24
Elementi i sklopovi		25
• Pogon prerade drveta		26
• Luka Šamac		27
Istorija Luke Šamac		28
Geografski položaj i površina		29
Aktivnosti, oprema i vrsta usluge		30
• Privrženost kvalitetu		31
• Bilješke		32
• Company identity		2
Balkan Steel I.E. History		4
Our vision		6
Our mission		6
Corproate values		6
• UNIS Tube Factory Derventa		7
Histry of UNIS		8
Investments & production capacity		9
• Tube Production Gear		10
Square tubes		10
Rectangular tubes		12
Round & round precise tubes		14
Medium heavy black welded tubes		16
Elliptic tubes		17
Closed 'D' profile tubes		17
ZP profiles		18
Precise cold mill tubes with small radius		19
Standard tube packaging		20
• Tubes processign gear		22
Construction supports, tripods		22
Frame scaffold		23
Greenhouses		24
Elements & compositions		25
• Wood processign gear		26
• Port Samac		27
History of Port Samac		28
Geographic location & area		29
Activities, equipment & type of service		30
• Committment to quality		31
• Notes		32



Još od svog osnivanja 1995. godine Balkan Steel I.E. holding kompanija je sve svoje potencijale koristio na poslovima vezanim za trgovinu, transport i proizvodnju čelika.

Višegodišnje iskustvo u organizaciji proizvodnje, transporta i trgovine čelikom, ostvareno na tržištima Rusije, Ukrajne i Dalekog istoka, omogućilo je kompaniji da i na tržištu Balkanskih zemalja, EU i SAD realizuje krupne rezultate u toj oblasti.

U borbi sa oštrom konkurencijom na prostorima bivših jugoslovenskih republika, a posebno u Republici Makedoniji i u BiH (Republici Srpskoj), Balkan Steel I.E. je po ostvarenim poslovnim rezultatima pokazao pravi put u privatizaciji postojećih privrednih kapaciteta, njihovoj modernizaciji i dovođenju u sam vrh u zemlji i u društvo vodećih evropskih kompanija za proizvodnju šavnih cijevi.

From its early foundations in 1995. Balkan Steel I.E. holding company has centered its potential on manufacture, transportation, and trade of steel products.

The extensive experience in organizing production, transportation and trade of steel accumulated in the markets of Russia, Ukraine and Far East, enabled the company to realize substantial achievements in the field in the markets of Balkan countries, EU and the US as well.

Throughout the struggle with fierce competition in Republic Macedonia and Bosnia and Herzegovina (Republic Srpska) with its business accomplishments Balkan Steel I.E. has demonstrated the right approach towards privatization of existing industrial capacities and their modernization, which lead to a leadership in the country as well as in the markets of leading European black inch tubes production companies.



Danas Balkan Steel I.E. fokusira svoje aktivnosti u BiH na dvije poslovne djelatnosti – UNIS Fabriku cijevi Derventa i Luku Šamac. U cijelom periodu od osnivanja do danas, menadžment Balkan Steel-a intenzivno radi na jačanju prodajne mreže kroz osnivanje preduzeća i predstavništava, te angažovanje prodajnih agenata u mnogim zemljama Evrope i Azije.

Tako je Balkan Steel za potrebe obavljanja svojih kupoprodajnih poslova u čelicima

- Osnovao firme u:
Bonu, Njemačka; Parizu, Francuska; Skopju, Makedonija;
- Otvorio predstavništva u :
Mariupolju, Ukrajina; Beogradu, Srbija; Banja Luci, BiH;
- Obezbedio prodajne agente u većini evropskih zemalja poput Francuske, Hrvatske, Bugarske.

Currently, Balkan Steel I.E. centers its business activities in Bosnia around two business entities – UNIS tube factory Derventa and the Port of Shamac. Throughout the period from company's foundation to nowadays, Balkan Steel management team places intensive efforts on strengthening the trade networks by establishing business entities and representative offices and engaging sales agents throughout the countries of Europe and Asia. Thus, following its trade requirements of steel products, Balkan Steel has established:

- business entities in the following locations:
Bonn, Germany; Paris, France; Skopja, Macedonia
- representative offices in the following locations:
Mariupol, Ukraine; Belgrade, Serbia; Banja Luka, Bosnia and Herzegovina
- and secured sales agents in majority of European countries, such as France, Croatia, Bulgaria



Balkan Steel I.E. je osnovan 1995. godine u Lihtenštajnu. Glavna poslovna djelatnost kompanije se zasniva na proizvodnji i prodaji čelika i proizvoda od čelika. Svoju djelatnost u početku je realizovao sa vodećim ruskim i ukrajinskim proizvođačima čelika kao trejder i transporter za plasman čelika na Daleki istok, a kasnije se ta djelatnost proširila na sopstvenu proizvodnju na prostoru Balkana.

U periodu od 1998. do maja 2004. godine Balkan Steel je većinski akcionar u okviru pogona "Ladna Valavnica i Valavnica za lenti-polukonti", Skopje, Republika Makedonija. Investiranjem u rekonstrukciju i modernizaciju proizvodnih pogona "Makedonske železare" utrostručio je broj zaposlenih i dostigao godišnji nivo proizvodnje od 600.000 tona raznih čeličnih proizvoda.

Pored poslova u Makedoniji, a u okviru svojih aktivnosti na proizvodnji čelika i čeličnih proizvoda, jedan značajan dio potencijala Balkan Steel je usmjerio ka proizvodnim kapacitetima u BiH.

Balkan Steel I.E. was founded in 1995 in Lichtenstein. The major business activities of the company centered on the production and trade of steel and steel products. The company realized its first business endeavors with leading Russian and Ukrainian producers of steel as a trader and transporter in placement of steel in Far East. Later on, that activities were expanded to self-manufactured production in the Balkan region. Throughout the period from 1998 to May 2004, as a result of being the major sthareholder in production framework of "Ladna Valavnica i Valavnica za lenti-polukonti" (Skopje, R. of Macedonia) and investing in reconstruction and modernization of "Macedonian Steel Factory" production facilities, Balkan Metal managed to triple the number of employees and reach the annual production level of 600,000 tons in a variety of steel products.

Along with business engagement in R. of Macedonia and within its framework of the production of steel and steel products, Balkan Steel has strategically re-directed significant portion of its potentials towards activities of production capacities in Bosnia and Herzegovina.



Takav primer je "Unis Fabrika cijevi Derventa" koja je ulaskom u sastav Balkan steel I.E. grupe svoje proizvodne kapacitete uvećala za deset puta za samo nekoliko godina i to sledećim redoslijedom:

- Godine 2002. Balkan Steel je kupio 65% ukupne vrijednosti fabrike "UNIS-fabrika cijevi a.d. Derventa", BiH. Nakon preuzimanja fabrike uslijedila je realizacija investicije u vrednosti preko 10 mil Eura i to u rekonstrukciju i modernizaciju proizvodnih pogona 4 miliona Eura, a istovremeno su izmirena i sva zaostala potraživanja od raznih povjerilca koja je UNIS imao iz ranijeg perioda;

- Aprila 2005. godine završene su aktivnosti na remontu i modernizaciji proizvodnog pogona fabrike i tri puta uvećan njen proizvodni kapacitet;

- U toku 2007. godine izgradnjom novog pogona za proizvodnju cijevi od 4" do 8" instalirana je još jedna i najveća linija u okviru fabrike cijevi sa godišnjim kapacitetom od 360.000 mt čime je fabrika cijevi u Derventi ušla u rang 10 najvećih u Evropi.

Na istom putu je i Luka Šamac kao najnoviji član grupacije Balkan steel, čiji resursi zahtevaju ozbiljna ulaganja, koja su u fazi realizacije i daju mogućnost za ostvarivanje izuzetno velikih rezultata u oblasti pretovara i transporta roba za teritoriji čitave BiH, što samo jasno ukazuje na veličinu privrednih poteza koje Balkan steel čini u kontinuitetu.

An example of such endeavors is "UNIS Tube Factory", Derventa. With its entry in Balkan Steel I.E. Group the factory has enlarged its production capacities by ten times in only a few years, pursuing the following path:

- In 2002 Balkan Steel has purchased 65% of the total value of "UNIS Tube Factory a.d. Derventa", Bosnia and Herzegovina. Upon overtaking the factory, the realization of investment in value of over 10 million Euro took place, 4 million Euro of which was dedicated to reconstruction and modernization of production facilities. At the same time, all other remaining obligations towards trustees that UNIS had from previous periods were resolved.

- In April 2005 the activities regarding the renovation and modernization of production facilities were finalized, and the capacity of factory's production facilities was tripled.

- During 2007, with the construction of new tube manufacturing facilities of 4'-8', one of the biggest lines in the framework of tube factory was additionally installed, holding the capacity of 360,000 mt. This led to the inclusion of tube factory in the placement of 10 largest producers in Europe.

Similar pattern of development has been predicted for "Port of Šamac" as well, which is the newest member of Balkan Steel Group and whose resources require significant investments in large undertakings, but which also open possibilities for achievement of exceptional results in the field of load and transportation of products on the entire territory of Bosnia and Herzegovina. This is another manifestation of the scale and magnitude of industrial endeavors that Balkan Steel has been continually undertaking.

Naša vizija

Stremimo ka tome da postanemo jedan od vodećih proizvođača i trejdera čeličnih proizvoda na istočno-evropskom tržištu. Odlučni smo u tome da isporučujemo konstruktivne prijedloge našim kupcima, bazirane na razumijevanju njihovih potreba i izgradnji uzajamnog povjerenja.

Naša misija

- Ponuditi proizvode vrhunskih standarda kvaliteta i performansi.
- Prepoznati kupčeve jedinstvene potrebe i posvetiti se njihovom ispunjenju kao podršci u kupčevim poslovnim ciljevima.
- Stvoriti poverenje kod naših kupaca bazirano na uverenju da uzajamna saradnja i dugotrajne poslovne veze donose neizmjernu korist.
- Ustanoviti vodeću poziciju na tržištu i promovisati našu pouzdanost i vjernost.

KORPORATIVNE VRIJEDNOSTI

- Vjerujemo da se plodna saradnja sa našim kupcima zasniva na istinskom razumijevanju njihovih potreba i našoj spremnosti za ispunjenja njihovih očekivanja.
- Visoko vrednujemo dugotrajne veze sa našim kupcima i saradnju u cilju uspjeha.
- Cijenimo posvećenost naših zaposlenih i prepoznajemo njihov trud kao ključ ka prosperitetu kompanije.
- Poštujemo principe fer poslovanja sa našim kupcima, našim zaposlenima i našim okruženjem.

Our vision

We are striving to become one of the leading manufacturers and sellers of steel products in Eastern European market. We opt to deliver constructive propositions to our customers based on understanding of their needs for the purpose of building mutual trust.

Our mission

- To offer products of premium quality standards and performance.
- To recognize customer's unique requirements and commit to fulfilling them in support of their business goals.
- To create trust for our customers founded on beliefs that mutual collaboration and long-term business relationships create mutual value.
- To establish leading position in the market and promote the promise of reliability and commitment.

CORPORATE VALUES

- We believe that truly fruitful collaboration with our customers stems from genuine understanding of their needs and our readiness to meet their expectations.
- We strongly value long-term relationships with our customers and cooperation in strive for success.
- We cherish the dedication of our employees and recognize their efforts as the keys to company's prosperity.
- We honor the principles of fair business practices with our customers, our employees and our environment.

UNIS FABRIKA CIJEVI DERVENTA UNIS TUBE FACTORY DERVENTA



Pogon proizvodnje cijevi / Tube Production Gear
Pogon prerade cijevi / Tube Processing Gear
Pogon prerade drveta / Wood processing Gear



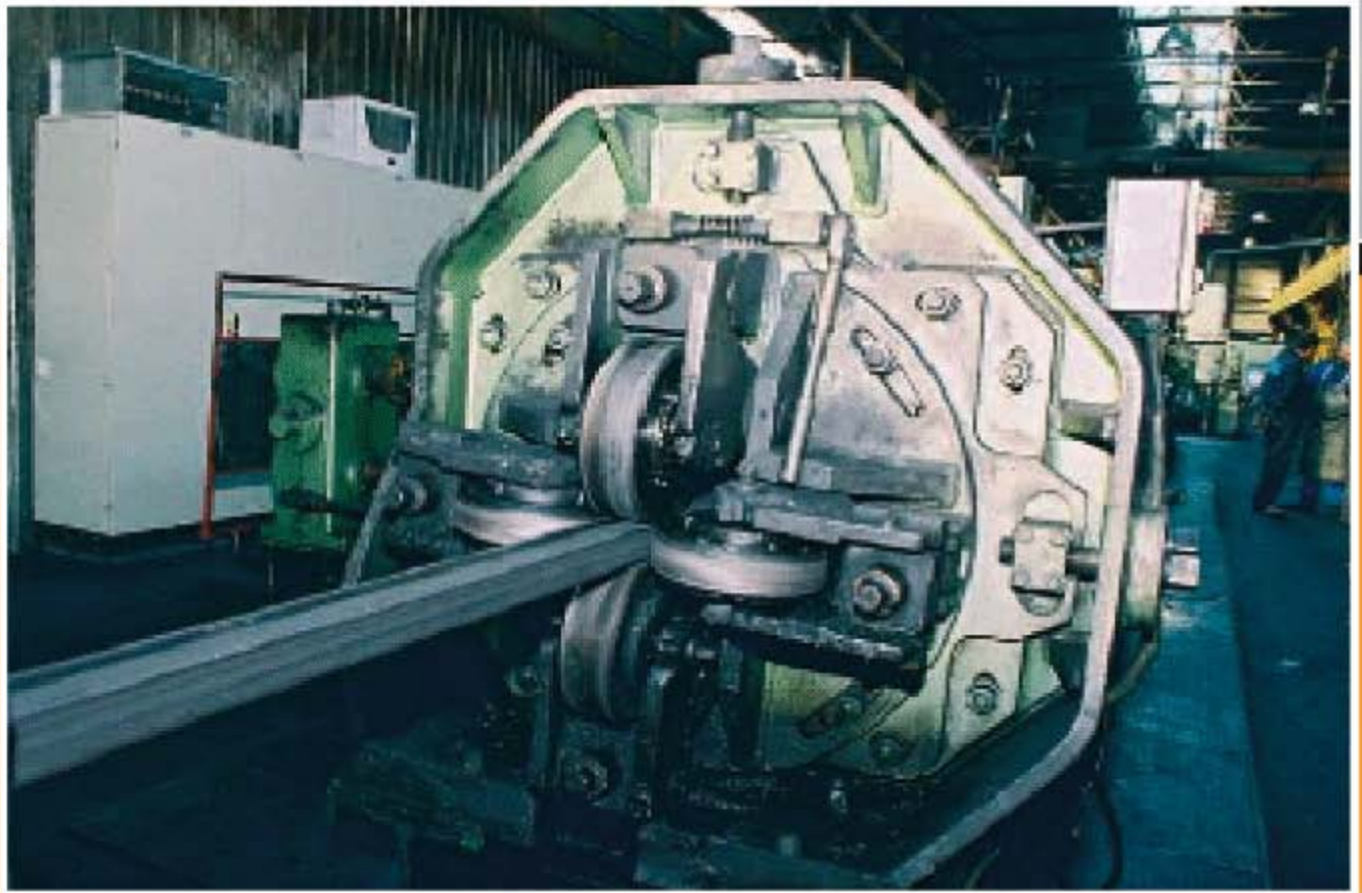


UNIS Fabrika cijevi a.d. Derventa osnovana je 1974. godine kao radna organizacija u sastavu "SOUR UNIS" Sarajevo. U početku preduzeće je proizvodilo okrugle precizne cijevi, crne colovske cijevi, ovalne cijevi, kvadratne cijevi i pravougaone cijevi različitih dimenzija. Do kraja 70-tih godina preduzeće je proširilo svoj proizvodni asortiman uvodeći proizvodnju žarenih hladnovučerenih cijevi, šavnih preciznih cijevi, te prerađenih cijevi. U narednim godinama preduzeće je otvorilo i pogon za preradu drveta, čiji se proizvodni program sastojao od proizvodnje lamperije, brodskih podova, stolarije, namještaja i dr.

Prve veće rezultate Fabrika je počela ostvarivati od 2002. godine preregistracijom preduzeća kada postaje akcionarsko društvo. Vršila se privatizacija državnog kapitala, nakon čega se kao većinski vlasnik (65%) pojavljuje kompanija Balkan Steel I.E.

UNIS Tube Factory A.D. Derventa was founded in 1974. as working organization of the "SOUR UNIS Sarajevo" company. From the beginning of its existence the enterprise has centered its activities on manufacturing round precise tubes, middle heavy black inched tubes, elliptic tubes, and square and rectangular tubes of various dimensions. By the end of 70's, the enterprise had enlarged its production offer, introducing the manufacture of glowing cold mill tubes, longitudinal welded tubes, and processed tubes. In the following years, the company had opened as well gear for processing of wood, the production offer of which consisted of manufacture of wooden elements for carpentry, joinery, furniture etc.

The greater results Factory began realizing in 2002 with re-registration of enterprise by which it becomes a shareholder enterprise - the privatization of state capital takes place, as a result of which Balkan Steel I.E. emerges as major owner of the company (holding 65% of shares).



- Početkom 2005. godine izvršen je generalni remont i modernizacija postrojenja za proizvodnju šavnih cijevi, čime je utrostručen proizvodni kapacitet sa 40.000t na 120.000t godišnje.

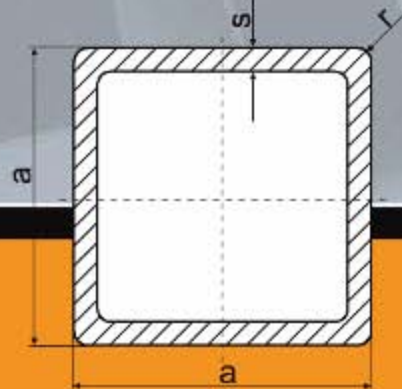
- U 2007. izgađeni su novi kapaciteti za proizvodnju cijevi velikih prečnika od 4 do 8 cola sa novih 360.000 tona godišnjeg kapaciteta, kakvih na teritoriji Bosne i Hercegovine nije bilo.

- U 2008. nova linija cijevi do 3/8 do 2 cola kapaciteta 36.000 tona godišnje, te krajem 2008. godine fabrika raspolaže sa ukupno 6 linija za proizvodnju šavnih cijevi i jednom linijom za proizvodnju hladnovučениh cijevi malih mjera u ukupnoj tonaži preko 500.000 tona cijevi godišnje (program po vrstama proizvoda i karakteristikama je predstavljen u nastavku).

- In the beginning of 2005, large-scale renovation and modernization of the construction on longitudinal welded tubes took place, tripling the annual production capacity from 40,000 tons to 120,000 tons.

- In 2007, new capacities for the production of large diameter tubes (from 4' to 8') were constructed, with the annual production capacity of 360,000 tons, the like of which was inexistent in the past on the territories of Bosnia and Herzegovina.

- In 2008 a new line of tubes of 3/8 to 2' was introduced with annual production capacity of 36,000 tons. This contributed to the possession of total 6 production lines for longitudinal welded tubes and 1 production line for cold mill tubes of small dimensions in total annual production 500,000 tons (the production program according to the types and characteristics of products is presented further).



OBLASTI PRIMJENE:

- Metalni namještaj
- Bravarija
- Čelične konstrukcije
- Građevinarstvo
- Poljoprivredne mašine i alatke
- Mašinogradnja
- Široka potrošnja

OBLIK

Cijevi imaju malo zaobljene uglove u standardnim izvedbama sa radijusom $r = 1.5s$, a prema posebnim zahtjevima mogu biti sa radijusom zaobljenja $r = 2s$ (gde je "s" debljina zida)

POSEBNE MOGUĆNOSTI ISPORUKE

Na zahtjev kupca cijevi se mogu isporučivati i dužinama:

- 4m do 8m za dimenzije do 90x90
- 6m do 12m za dimenije od 100 x 100 do 150 x 150

OSNOVNI MATERIJAL

- Hladno valjana čelična traka, prema evropskoj normi EN 10130/91 + A1/94, debljine 1,0 do 2,0 mm
- Toplo valjana čelična traka prema EN 10111/98, EN 10025/91 debljine 1,5 do 8mm

Sadržaj Si: max 0,03%
(pogodan za galvanizaciju)

AREAS OF APPLICATION

- Metal furniture
- Locking systems
- Steel constructions
- Building construction
- Agricultural machines and tools
- Manufacture of machines
- Wide application

SHAPE

The tubes have slightly rounded angles with standard performance in radius $r = 1.5 s$, and according to special requirements can be with radius of roundedness $r = 2s$ (where 's' is the wall thickness)

SPECIAL DELIVERY OPTIONS

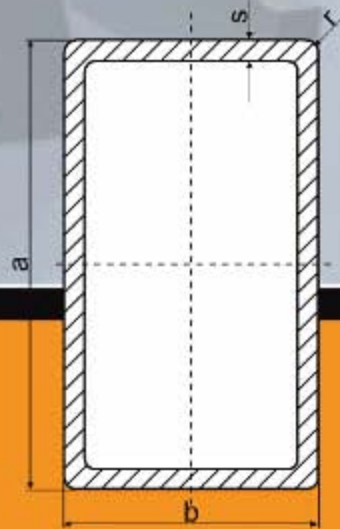
Based on buyer's request, the tubes can be delivered in length of:

- 4m to 8 m for dimensions up to 90 x90
- 6m to 12 m for dimensions from 100 x 100 to 150 x 150

BASIC MATERIAL

- Cold mill steel band, according to European norm EN 10130/91 + A1/94, thickness 1.0 to 2.0 mm
- Hot mill steel band, according to EN 10111/98, EN 10025/91, thickness 1.5 to 8 mm

Content of Si: max 0.03%
(suitable for galvanization)



OBLASTI PRIMJENE

- Metalni namještaj
- Bravarija
- Lake čelične konstrukcije
- Građevinarstvo
- Poljoprivredne mašine i alatke
- Mašinogradnja
- Široka potrošnja

OBLIK

U skladu sa datim standardima, cijevi imaju malo zaobljene uglove u standardnim izvedbama sa radijusom $r = 1.5s$, a prema posebnim zahtjevima mogu biti sa radijusom zaobljenja $r = 2s$ (gde je "s" debljina zida)

POSEBNE MOGUĆNOSTI ISPORUKE

Na zahtjev kupca cijevi se mogu isporučivati u dužinama:

- 4m do 8m do 100 x 80
- 6m do 12 m od 120 x 80 do 200 x 100

OSNOVNI MATERIJAL

- Hladno valjana čelična traka, prema evropskoj normi EN 10130/91 + A1/94, debljine 1.0 do 2.0 mm
- Toplo valjana čelična traka prema EN 10111/98 i drugih prema EN 10025/91 debljine 1.5 do 8 mm.

Sadržaj Si: max 0,03%
 (pogodan za galvanizaciju)

AREAS OF APPLICATION

- Metal furniture
- Locking systems
- Light steel constructions
- Building construction
- Agricultural machines and tools
- Manufacture of machines
- Wide application

SHAPE

According to stated standards, the tubes have slightly rounded angles with standard performance in radius $r = 1.5s$, and according to buyer's request can be with radius of roundedness $r = 2s$ (where "s" is the wall thickness)

SPECIAL DELIVERY OPTIONS

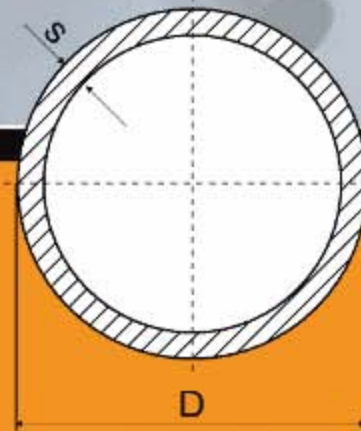
Based on buyer's request, the tubes can be delivered in length:

- 4m to 8m, up to 100 x 80
- 6m to 12m, from 120 x 80 to 200 x 100

BASIC MATERIAL

- Cold mill steel band, according to European norm EN 10130/91 + A1/94, with thickness 1.0 to 2.0 mm
- Cold mill steel band, according to EN 10111/98, and others according to EN 10025/91, with thickness 1.5 to 8 mm.

Content of Si: max 0.03%
 (suitable for galvanization)



OBLASTI PRIMJENE

- Automobili
- Građevinarstvo
- Metalni namještaj
- Enterijeri
- Sanitarni uređaji
- Razne konstrukcije
- Široka potrošnja

POSEBNE MOGUĆNOSTI ISPORUKE

Na zahtjev kupca cijevi se mogu isporučivati u dužinama:

- 4 m do 8 m do \varnothing 114
- 6 do 12 m, \varnothing 127-219

OSNOVNI MATERIJAL

- Hladno valjana čelična traka prema evropskoj normi EN 10130/91 + A1/94, debljine 1.0 do 2.0 mm
- Toplo valjana čelična traka prema EN 10111/98 i drugih prema EN 10025/91 debljine 1.5 do 8 mm

Sadržaj Si; max 0,03%
 (pogodan za galvanizaciju)

AREAS OF APPLICATION

- Automobiles
- Building construction
- Metal furniture
- Interiors
- Sanitary appliances
- Various constructions
- Wide application

SPECIAL DELIVERY OPTIONS

Based on buyer's request, the tubes can be delivered in length:

- 4 m to 8 m, up to \varnothing 114
- 6 to 12 m, \varnothing 127-219

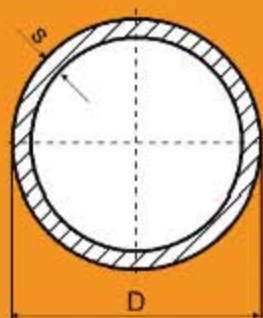
BASIC MATERIAL

- Cold mill steel band, according to European norm EN 10130/91 + A1/94, with thickness 1.0 to 2.0 mm
- Hot mill steel band, according to EN 10111/98, and others according to EN 10025/91, with thickness 1.5 to 8mm

Content of Si; max 0.03%
 (suitable for galvanization)

MASE OKRUGLIH CIJEVI / MASS OF ROUND PRECISE TUBES

Prečnik cijevi D(mm) Diameter D(mm)	Debljina stijenke s(mm) ±10% / Thickness s(mm) ± 10%																
	1,00	1,20	1,50	1,80	2,00	2,50	3,00	3,50	4,00	4,50	5,00	5,50	6,00	6,50	7,00	7,50	8,00
	Masa(kg/m) ±10% / mass (kg/m) ± 10%																
16,0	0,370	0,438	0,536	0,630	0,691												
17,2	0,400	0,474	0,581	0,684	0,750												
18,0	0,419	0,497	0,610	0,719	0,789												
20,0	0,469	0,556	0,684	0,808	0,888												
21,3	0,500	0,594	0,732	0,865	0,951	1,159											
22,0	0,518	0,616	0,758	0,897	0,966	1,202											
25,0	0,582	0,704	0,869	1,030	1,134	1,387											
25,4		0,716	0,884	1,048	1,154	1,412											
26,0		0,733	0,906	1,074	1,183	1,448											
26,9		0,761	0,940	1,114	1,228	1,504											
28,0		0,783	0,980	1,163	1,282	1,572											
30,0		0,852	1,054	1,252	1,381	1,695											
31,5		0,897	1,110	1,318	1,455	1,788											
32,0		0,911	1,128	1,341	1,480	1,819											
33,7		0,961	1,191	1,415	1,563	1,923	2,271										
35,0		1,000	1,239	1,474	1,628	2,004	2,368										
38,0		1,089	1,350	1,607	1,776	2,189	2,589										
40,0		1,148	1,424	1,696	1,874	2,312	2,737										
42,4		1,219	1,513	1,802	1,993	2,480	2,915										
45,0		1,286	1,609	1,918	2,121	2,620	3,107										
48,3			1,731	2,064	2,284	2,824	3,351	3,887	4,370								
50,0			1,794	2,140	2,368	2,929	3,477	4,014	4,538								
51,0			1,831	2,163	2,416	2,990	3,551	4,099	4,636								
55,0			1,979	2,362	2,614	3,237	3,847	4,445	5,031								
56,0			2,016	2,406	2,663	3,298	3,921	4,532	5,130								
57,0			2,053	2,450	2,713	3,360	3,995	4,618	5,228								
60,3			2,175	2,587	2,876	3,564	4,239	4,903	5,554								
63,5			2,293	2,739	3,033	3,761	4,476	5,179	5,869								
65,0			2,349	2,805	3,107	3,853	4,587	5,308	6,017								
70,0			2,533	3,027	3,354	4,162	4,957	5,740	6,511								
76,1			2,760	3,298	3,655	4,538	5,408	6,286	7,112								
80,0			2,904	3,471	3,847	4,778	5,697	6,603	7,497								
88,9			3,233	3,866	4,266	5,327	6,355	7,371	8,375								
101,6				4,429	4,912	6,109	7,294	8,467	9,627								
106,0				4,625	5,129	6,380	7,619	8,846	10,06								
108,0				4,714	5,228	6,504	7,786	9,020	10,25								
114,3					5,538	6,892	8,233	9,563	10,87								
127,0							9,17	10,65	12,13	13,59	15,04	16,47	17,90	19,31	20,71	22,10	23,47
133,0							9,82	11,16	12,72	14,26	15,76	17,29	18,79	20,28	21,75	23,21	24,66
139,7							10,11	11,75	13,38	15,00	16,60	18,20	19,78	21,35	22,90	24,45	25,98
152,4								12,85	14,83	16,41	18,17	19,92	21,66	23,38	25,09	26,79	28,48
159,0								13,42	15,29	17,14	18,99	20,82	22,64	24,44	26,24	28,02	29,66
168,3								14,22	16,20	18,17	20,13	22,08	24,01	25,93	27,84	29,73	31,62
178,3								15,08	17,19	19,28	21,36	23,43	25,49	27,53	29,56	31,58	33,59
192,0								16,26	18,54	20,80	23,05	25,29	27,52	29,73	31,93	34,12	36,29
193,7								16,42	18,71	21,00	23,27	25,53	27,77	30,01	32,23	34,44	36,63
219,1								18,80	21,21	23,81	26,39	28,97	31,53	34,07	36,61	39,13	41,64



Prečnik / Diameter		Debljina stijenke Wall Thickness S(mm)
R (")	D (mm)	
3/8"	17.2	2.35
1/2"	21.3	2.65
3/4"	26.9	2.65
1"	33.7	3.25
1 1/4"	42.4	3.25
1 1/2"	48.3	3.25
2"	60.3	3.65
2 1/2"	76.1	3.65
3"	88.9	4.05
4"	114.3	4.55
5"	139.7	5.05
6"	168.3	5.05
8"	219.1	5.0 - 8.0

OBLASTI PRIMJENE

- Instalacije za provođenje fluida
- Proizvodnja aparata
- Čelične konstrukcije
- Građevinarstvo
- Poljoprivredne mašine
- Široka potrošnja

Na krajevima cijevi može da se nareže cijevni navoj.

POSEBNE MOGUĆNOSTI ISPORUKE

- Sa obrađenim krajevima
- Izravnaće na tačnost 1mm/m
- Hidroispitane na pritisak od 5MPa/50 bara
- Elektromagnetno ispitivanja prema EN 10246

OSNOVNI MATERIJAL

- Toplo valjana traka prema EN 10025/91

Sadržaj Si: max 0,03%
 (pogodan za galvanizaciju)

AREAS OF APPLICATION

- Installations for flow of fluids
- Manufacture of appliances
- Steel constructions
- Building constructions
- Agricultural machines
- Wide application

Tube coil can be cut at the ends of the tubes.

SPECIAL DELIVERY OPTIONS

- With processed ends
- Flattened with precision 1mm/m
- Hydro-tested on pressure of 5MPa/50 bars
- Electromagnet-testing according to EN 10246

BASIC MATERIAL

- Hot mill band according to EN 10025/91

Content of Si: max 0.03%
 (suitable for galvanization)

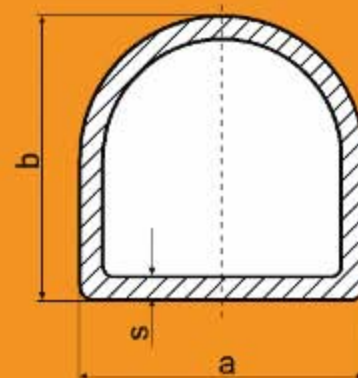
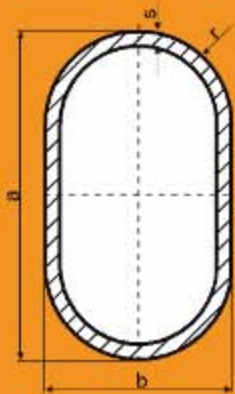
OVALNE-ELIPSOIDNE CIJEVI / ELLIPTIC TUBES



ZATVORENI 'D' PROFILI / CLOSED 'D' PROFILES



Dimenzija "D" profila Dimension of D" Profile		Debljina stijenke S(mm) ± 10% Thickness side S(mm) ± 10%	
a(mm)	b(mm)	od	do
22	38	1	2



OBLASTI PRIMJENE

- Metalni namještaj
- Enterijeri
- Široka potrošnja

POSEBNE MOGUĆNOSTI ISPORUKE

Na zahtjev kupca cijevi se mogu isporučivati u dužinama 4 m do 8m.

OSNOVNI MATERIJAL

Hladno valjana čelična traka prema evropskoj normi EN 10130/91 + A1/94, debljine 1.0 do 2.0 mm.

AREAS OF APPLICATION

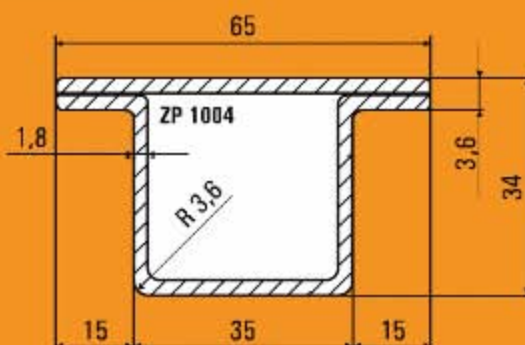
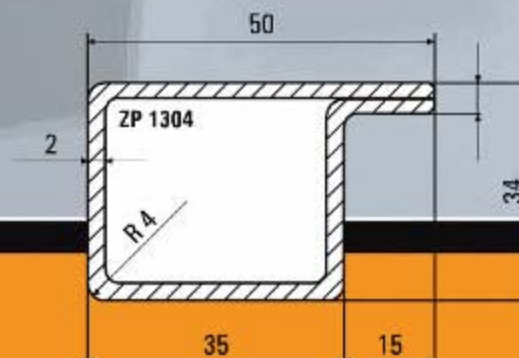
- Metal furniture
- Interiors
- Wide application

SPECIAL DELIVERY OPTIONS

Based on buyer's request, the tubes can be delivered in length 4m to 8 m.

BASIC MATERIAL

Cold mill steel band, according to European norm EN 10130/91 + A1/94, with thickness 1.0 to 2.0 mm.



Naziv profila Name of profile	Debljina stijenke $\pm 10\%$ Wall thickness $\pm 10\%$			Dimenzije Dimensions
	1.5	1.8	2	
	Masa/mass (kg/m) $\pm 10\%$			
ZP 1004	2.34	2.73	2.84	65 x 35 x 34
ZP 1304	1.98	2.3	2.4	50 x 35 x 34

OBLAST PRIMJENE

- Bravarija
- Široka potrošnja

POSEBNE MOGUĆNOSTI ISPORUKE

Na zahtjev kupca cijevi se mogu isporučivati u dužinama 4m do 8m.

OSNOVNI MATERIJAL

Toplo valjana čelična traka prema standardu EN10111 i EN10025

AREAS OF APPLICATION

- Locking systems
- Wide applications

SPECIAL DELIVERY OPTIONS

Based on buyer's request, the tubes can be delivered in length 4m to 8m.

BASIC MATERIAL

Hot mill steel band according to standard EN10111 and EN10025



Prečnik cijevi D(mm) Diameter D(mm)	Debljina stijne S(mm) ± 10% Thickness of side S(mm) ± 10%				
	0.7	0.8	0.9	1	1.2
	Masa/mass (kg/m) ± 10%				
8	0.126	0.142	0.157	0.173	
9	0.143	0.173	0.193	0.197	
10	0.161	0.181	0.201	0.222	
11	0.192	0.201	0.224	0.246	0.29
12	0.195	0.22	0.246	0.271	0.32
13	0.212	0.24	0.268	0.295	0.379
14	0.23	0.26	0.29	0.321	0.379
15	0.247	0.28	0.312	0.345	0.408

OBLASTI PRIMJENE

- Metalna galanterija

POSEBNE MOGUĆNOSTI ISPORUKE

Cijevi se isporučuju:

- U šipkama dužine 4m do 8m

OSNOVNI MATERIJAL

Hladno valjana traka kvaliteta DC 01, DC03, DC 04, prema EN 10130 sa debljinom zida od 0.7 mm do 1.5 mm.

AREAS OF APPLICATION

- Metal haberdashery

SPECIAL DELIVERY OPTIONS

The tubes are delivered:

- In bars with length 4m to 8 m

BASIC MATERIAL

Cold mill coil quality DC 01, DC03, DC04, according to EN 10130 with wall thickness from 0.7 mm to 1.5 mm.

Kvadratne cijevi / Square Tubes			
Dimenzija cijevi Tube dimensions	Broj cijevi u osnovi i visini / Number of tubes at bases and at height		Broj cijevi u buntu / Number of tubes in bundle
	a(mm)		
15	15	12	180
18	15	12	180
18	15	12	180
20	14	12	168
22	14	12	168
25	12	12	144
30	10	10	100
35	9	9	81
40	8	8	64
45	7	7	49
50	6	6	36
60	5	5	25
70	4	4	16
80	4	4	16
90	3	3	9

Pravougaone cijevi / Rectangular tubes				
Dimenzije cijevi Tube dimensions		Broj cijevi u osnovi i visini / Number of tubes at bases and at height		Broj cijevi u buntu / Number of tubes in bundle
a(mm)	b(mm)			
20	10	14	22	308
25	15	12	18	216
25	20	12	16	160
30	10	10	22	220
30	15	10	18	180
30	20	10	14	140
35	15	9	18	162
40	20	8	14	112
40	25	8	14	112
40	27	8	10	80
40	30	8	10	80
45	25	7	10	70
50	20	6	14	84
50	30	6	10	60
50	40	6	8	48
60	20	5	14	70
60	30	5	10	50
60	40	5	7	35
70	30	4	6	24
70	40	4	7	28
70	50	4	6	24
80	20	4	16	60
80	40	4	8	32
80	50	4	6	24
80	60	4	5	20
90	30	3	10	30
90	50	3	6	18
100	20	3	10	30
100	25	3	10	30
100	40	3	7	21
100	60	3	6	18
100	80	3	3	9
120	40	3	6	18
120	60	3	6	18

Okrugle cijevi / Round tubes		
Prečnik cijevi / Tube diameter D(mm)	Broj cijevi u osnovi / Number of tubes at bases	Broj cijevi u buntu / Number of tubes in a bundle
16,0	10	271
17,2 (3/8")	9	217
18,0	9	217
20,0	9	217
21,3 (1/2")	7	127
22,0	7	127
25,0	7	127
25,4	7	127
26,0	7	127
26,9 (3/4")	7	127
28,0	7	127
30,0	6	91
31,5	6	91
32,0	6	91
33,7 (1")	6	91
35,0	6	91
38,0	6	91
40,0	5	61
42,4 (1 1/4")	5	61
45,0	5	61
48,3 (1 7/8")	5	61
50,0	5	61
51,0	5	61
55,0	5	61
56,0	5	61
57,0	5	61
60,3 (2")	4	37
63,5	4	37
65,0	4	37
70,0	4	37
76,1 (2 7/8")	4	37
80,0	4	37
88,9 (3")	3	19
101,6	3	19
106,0	3	19
108,0	3	19
114,3 (4")	3	19

STANDARD PAKOVANJA KVADRATNIH CIJEVI DUŽINE 12.000mm
STANDARD PACKAGING OF SQUARE TUBES OF LENGTH 12,000mm

	B	H	Broj cijevi u buntju / Number of tubes in bundle
100x100x12000	4	4	16
110x110x12000	4	4	16
120x120x12000	4	4	16
130x130x12000	4	4	16
140x140x12000	3	3	9
150x150x12000	3	3	9

STANDARD PAKOVANJA KVADRATNIH CIJEVI DUŽINE 6.000mm
STANDARD PACKAGING OF SQUARE TUBES OF LENGTH 6,000mm

	B	H	Broj cijevi u buntju / Number of tubes in bundle
100x100x6000	6	6	36
110x110x6000	6	6	36
120x120x6000	6	6	36
130x130x6000	5	5	25
140x140x6000	4	4	16
150x150x6000	4	4	16

STANDARD PAKOVANJA PRAVUGAONIH CIJEVI DUŽINE 12.000mm
STANDARD PACKAGING OF RECTANGULAR TUBES OF LENGTH 12,000mm

	B	H	Broj cijevi u buntju / Number of tubes in bundle
120x80x12000	4	5	20
120x100x12000	4	4	16
140x80x12000	4	4	16
140x100x12000	4	4	16
150x100x12000	3	5	15
160x80x12000	3	5	15
160x100x12000	3	5	15
160x120x12000	3	4	12
200x80x12000	2	4	8
200x100x12000	2	5	10

STANDARD PAKOVANJA PRAVUGAONIH CIJEVI DUŽINE 6.000mm
STANDARD PACKAGING OF RECTANGULAR TUBES OF LENGTH 6,000mm

	B	H	Broj cijevi u buntju / Number of tubes in bundle
120x80x6000	5	8	40
120x100x6000	5	6	30
140x80x6000	4	8	32
140x100x6000	5	6	30
150x100x6000	4	5	20
160x80x6000	4	8	32
160x100x6000	4	7	28
160x120x6000	4	6	24
200x80x6000	4	8	32
200x100x6000	3	7	21

STANDARD PAKOVANJA OKRUGLIH CIJEVI DUŽINE 12.000mm
STANDARD PACKAGING OF ROUND TUBES OF LENGTH 12,000mm

	Broj cijevi u osnovi / Number of tubes at bases	Broj cijevi u buntju / Number of tubes in bundle
Ø127,4	2	7
Ø133	2	7
Ø139,7	2	7
Ø152,4	2	7
Ø159	2	7
Ø168,3	2	7
Ø178,3	2	7
Ø192	2	7
Ø193,7	2	7
Ø219,1	2	7

STANDARD PAKOVANJA OKRUGLIH CIJEVI DUŽINE 6.000mm
STANDARD PACKAGING OF ROUND TUBES OF LENGTH 6,000mm

	Broj cijevi u osnovi / Number of tubes at bases	Broj cijevi u buntju / Number of tubes in bundle
Ø127,4	3	19
Ø133	3	19
Ø139,7	3	19
Ø152,4	3	19
Ø159	2	7
Ø168,3	2	7
Ø178,3	2	7
Ø192	2	7
Ø193,7	2	7
Ø219,1	2	7



	H-min	H-max	P-min	P-max
1	1.5m	2.7m	8.8kN	18.2kN
2	1.7m	3.0m	7.3kN	18.1kN
3	2.1m	3.5m	6.0kN	17.5kN
4	2.2m	4.0m	7.0kN	19.0kN
5	2.5m	4.5m	5.8kN	18.0kN
6	3.0m	5.0m	5.0kN	15.2kN

OBLASTI PRIMJENE

Podupirač je samostalni stub koji može preuzeti samo sile pritiska. Ima široku primjenu u građevinarstvu.

MONTAŽA I DEMONTAŽA

Podupirač se lako montira i demontira. Sastoji se od donjeg i gornjeg dijela, zaštitne podloške i osigurača. Gornji i donji dio izveden je od cijevi sa zavarenim rebrenim stopama. Gornji dio je od cijevi Ø48 mm i uvlači se u donji dio od cijevi Ø56 mm. Grubo podešavanje podupirača omogućeno je pomoću rupa na gornjem dijelu u razmacima od 100 mm i osigurača. Fino podešavanje izvodi se navojnom maticom. Preko rupa na stopama podupirači se mogu učvrstiti na podlogu. Na njih se može osloniti sekundarna oprema potrebna pri izgradnji.

PROIZVODNI PROGRAM

Obuhvata 6 standardnih tipova koji se koriste za visine od 1.5 do 5.00 m sa karakteristikama koje su ispitane po atestu br. 3003022200/06. Po zahtjevu mogu se raditi i druge visine.

KAPACITET NOSIVOSTI

Prema tabeli može se videti kolika je nosivost podupirača za različite visine. Pri upotrebi nije dozvoljeno prekoračenje propisanog opterećenja.

OSNOVNI MATERIJAL

Osnovni materijal je čelik prema standardu EN 10025.

STANJE ISPORUKE

Podupirači se isporučuju obojeni jedanput temeljnom bojom. Po zahtjevu mogući su viši nivo zaštite. Pakovanje se izvodi u buntove od 50 kom.

AREA OF USAGE

Support is an independent column which can overtake only the forces of pressure. It has wide area of application in building constructions.

COMPOSURE AND DISASSEMBLY

Support is easy to compose and decompose. It consists of lower and upper parts, protective pad and safety lock. Upper and lower parts are made of tubes with welded ribbed feet. The upper part has a diameter of 48 mm and is inserted in the lower part, made of tube with diameter of 56 mm. Rough adjustment of height of the support is enabled by holes on the upper part, with distance of 100 mm apart, and by safety lock. Precise adjustment is made by coil nut. Through the holes on the ends the supports can be fixed to the ground. Secondary construction can be placed on them, according to the needs of construction.

PRODUCTION PROGRAMME

Production programme includes 6 standard types which are used for heights from 1.5 to 5 m, with characteristics attested according to atest number 3003022200/06. Based on customer request, other heights can also be produced.

LOAD - BEARING CAPACITY

The table displays load bearing capacity for the supports of various heights. The use of supports should not exceed the load prescribed.

BASIC MATERIALS

Basic material is steel according to quality standard EN 10025.

DELIVERY CONDITION

Supports are delivered with one layer of basic paint. Higher level of protection is also available, if requested. Packaging: bundles of 50 pieces.



TIPOVI SKELA / TYPES OF SCAFFOLDS

Naziv / Name	Visina / Height	Širina / Width	Dužina / Length
UNIS 105	2000	105	1800
UNIS 90	2000	90	1800
UNIS 70	2000	70	2500

OBLASTI PRIMJENE

- Građevinarstvo
- Zanatski radovi
- Instalerski radovi
- Konstruktivni elementi

Primjena ramovske skele je naročito pogodna za brzu montažu i demontažu, maksimalno do 20 m visine montaže.

Skela je atestirana kod nadležne institucije za izdavanje atesta.

OBLIK

Skela je rađena od okruglih cijevi $\text{Ø}48.3 \times 2.6$ mm sa potrebnim dijagonalama i prečkama izrađenim od cijevi $\text{Ø}27 \times 2.0$ mm. Skela je konstruisana za nazivnu nosivost od 2.0 kN/m^2 .

MATERIJAL

Cevi za skelu su urađene od materijala prema standardu EN 10025.

AREAS OF APPLICATION

- Building construction
- Craftsmanship
- Installation works
- Construction elements

Application of frame scaffolds is especially suitable for quick assembly and disassembly, maximum up to 20 m in height of installment.

The scaffold is attested by institution authorized for the issue of attestations.

SHAPE

The scaffold is made of long tubes $\text{Ø}48.3 \times 2.6$ mm, with required diagonals and rungs made of tubes $\text{Ø}27 \times 2.0$ mm. The scaffold is constructed for nominal load from 2.0 kN/m^2 .

MATERIAL

The tubes of the scaffold are made of material according to standard EN 10025.



TIPOVI PLASTENIKA / TYPES OF GREENHOUSES

	TIP I TYPE I	TIP II TYPE II	TIP IV TYPE IV	TIP "PRIMA" TYPE "PRIMA"
Korišna površina Effective area	100 m ²	100 m ²	400 m ²	100 m ²
Širina Width	5,5m	5,5m	8,0m	5,35m
Dužina Length	18,0m	18,0m	50,0m	19,0m
Visina Height	2,6m	2,6m	3,6m	3,6m
Širina polja Width of field	1.5m	1.5m	2.0m	1.45m
Broj polja-standard Number of fields	12	12	25	13
Izvedba Production	Jednostruka folija Single side foil	Dvostruka folija Double side foil	Dvostruka folija Double side foil	Jednostruka folija Single side foil
Navodnjavanje Watering	Po zahtjevu By request	Po zahtjevu By request	Po zahtjevu By request	Po zahtjevu By request

KARAKTERISTIKE

- svi metalni elementi se isporučuju zaštićeni akrilnom temeljnom i pokrivnom (bijelom) bojom.
- garancija konstrukcije je 10 godina.
- provjetranje - do dužine 27 m max dovoljno je čeono provjetranje pomoću leptir vrata.
- za veće dužine preporučuje se ugradnja i bočnog provjetranja.
- montaža i demontaža plastenika je jednostavna, brza i laka.

NAČIN ISPORUKE

Plastenik se može isporučiti kao konstrukcija bez montaže i folije ili konstrukcija sa montažom i folijom po zahtjevu kupca. Kod isporuke plastenika sa folijom i sistemom za navodnjavanje, karakteristike i obim se definišu prema zahtjevu kupca.

CHARACTERISTICS

- all metal elements are protected with basic acrylic white paint
- constructions have 10 year warranty
- ventilation up to 27m max, frontal ventilation through "butterfly" door is sufficient
- building frontal ventilation is recommended for bigger heights
- montage and disassembly of greenhouses is fast and easy

DELIVERY CONDITION

Green houses can be delivered in kit without plastic sheeting, or assembled with plastic sheeting according to customer's wishes. When green houses are delivered with plastic sheeting and irrigation system, characteristics and capacity of irrigation system are defined by customer's wishes.



Ovaj program realizuje razne i najmodernije operacije, služi za proizvodnju elemenata i konstrukcija napravljenih od cijevi, trake i lima.

Te operacije su:

- sječenje
- savijanje
- bušenje i perforiranje
- presovanje
- zavarivanje (automatsko i poluautomatsko, CO2 postupak)
- površinska zaštita cijevi, elemenata i sklopova EPOKSI prahom
- izrada i održavanje alata
- druge operacije u okviru postojećih tehničkih mogućnosti.

OBLAST PRIMJENE

Program obuhvata proizvodnju elemenata i sklopova od cijevi i lima pripremljenih za ugradnju u industriji namještaja, proizvodnji bicikla, industriji građevinske opreme, automobilskoj industriji sa raznim konstrukcijama i sa najširoim i najraznovrsnijom upotrebom.

OBLIK

Prema tehničkoj dokumentaciji kupca ili na osnovu uzorka.

MATERIJAL

Elementi se rade iz cijevi, trake i lima koji su uključeni u proizvodni program Fabrike.

This programme realizes various and most modern functions, and is used for production of elements and constructions made of tubes, mill and sheet steel.

The functions are:

- cutting
- bending
- drilling and perforating
- pressing
- welding (automatic and semi-automatic, CO2 approach)
- surface protection of tubes, elements and conjunction with EPOKSI powder
- manufacture and preservation of tools
- other functions within technical abilities

AREA OF USAGE

The programme includes the manufacture of elements and conjunctions made of tubes and sheet steel, prepared for installation in the furniture industry, manufacture of bicycles, construction equipment industry, automobile industry, with various constructions and widest and diverse area of usage.

FORM

According to technical documentation of the buyer or by the sample.

MATERIALS

The elements are made of tubes, mill, and sheet steel which are included in the production programme of the factory.



Pogon za preradu drveta ima više mogućnosti obrade drveta od cijelih trupaca do finalnih elemenata za industriju namještaja i to na postrojenjima kao što su:

- Pila: tip trupčara – \varnothing 1320
kapacitet: 6.000m³ trupaca godišnje
- Dimenzije građe: dužina 2-9 m
prečnik 15-90 cm
- Sušara: Tip Nigos
kapacitet: 140 m³ rezane građe u jednom turnusu
- Proizvodi:
 - ▣ Lege - podmetači raznih dimezija za metalnu industriju
 - ▣ Briketi \varnothing 78 mm u dužini po potrebi kupaca
 - ▣ Dijelovi namještaja od masiva: kreveti, noćni ormarići, obloge za stepeništa – gazišta, kao i drugi slični proizvodi po narudžbi kupaca

Wood processing gear has several possibilities of wood processing, from the whole trunks to the final elements such as:

- Saw: type of trunk processor – \varnothing 1320
Capacity: 6,000m³ annually of trunks
- Dimensions of construction: length 2-9 m
diameter 15-90 cm
- Drier: type Nigos
Capacity: 140 m³ of cut build in one charge
- Products:
 - ▣ Wooden elements-pallets for lashing-separation in steel industry of various dimensions
 - ▣ Briquettes \varnothing 78 mm in length according to buyer's request
 - ▣ Wood massive furniture elements: beds, nightstands, laggings for steps – treads, as well as other similar products according to buyer's request.

LUKA ŠAMAC
PORT SAMAC





Luka Šamac je osnovana 1979. godine u Šamcu, BiH i obavlja djelatnosti pretovara i transporta robe.

Izgradnja Luke Šamac je planirana u 3 faze i to sa kapacitetima pretovara roba:

- u 1. fazi do 1.000.000 tona/godišnje
- u 2. fazi do 3.000.000 tona/godišnje
- u 3. fazi do 5.000.000 tona/godišnje

Reorganizacija luke u akcionarsko društvo je ostvarena 2002., a 2005. godine od strane Balkan steel-a. Izvršena je privatizacija od strane Balkan Steela nakon čega se ušlo u obnavljanje ratom uništenih pretovarnih kapaciteta Luke. Ostvareni su sljedeći građevinski poduhvati:

- Operativna obala dužine 311 metara, širine 14,5 metara, za teške terete
- Operativna obala u dužini 150 metara
- Otvoreno skladište - plato luke površine 30.000 m²
- Zatvoreno skladište površine 3.600 m²
- Dvije trafo-stanice 10/0.4KV, 630 KVA
- Asfaltirani pristupni put dužine 560 metara
- Industrijski željeznički kolosijek dužine 1630 metara povezan sa željezničkom stanicom Šamac
- Temelji upravne zgrade
- Rekonstruisan je odbrambeni nasip pored rijeke Save za odbranu grada od poplava
- Izgrađen je nasip oko budućeg lučkog bazena, za luku bazenskog tipa
- Izgrađena je ograda oko preduzeća

Port of Shamac was founded in 1979. in Samac, Bosnia and Herzegovina, and centered its activities on the load and transportation of cargo.

The construction of Port Samac was planned in 3 phases with the following annual capacity of cargo load and transportation:

- Phase 1: up to 1,000,000 tons/annually
- Phase 2: up to 3,000,000 tons/annually
- Phase 3: up to 5,000,000 tons/annually

The reorganization of the port into shareholder enterprise was realized in 2002, and in 2005 Balkan Steel has conducted its privatization, upon which the renovation of port loading capacities damaged during the war took place. The following construction initiatives were accomplished:

- Operating coast I with the length 311 m, width 14.5 m for heavy load;
- Not fully completed operating coast with the length 150 m;
- Open-air warehouse – port platform, with the area 30,000 m²;
- Closed warehouse with the area 3,600 m² ;
- Two transformers 10/0.4KV, 630 KVA;
- Asphalted approach road with the length of 560 m;
- Industrial railway road length 1,630 m, connected with the railway road "Samac";
- Gatekeepers lodge;
- The foundation of head offices;
- Reconstructed defensive dike by the river Sava for defending the town from floods;
- Constructed dike surrounding the future port pool, for the port of the pool type;
- Constructed fence surrounding the offices



- Luka Šamac se nalazi na rijeci Savi između Zagreba i Beograda, na sjeveru BiH
- Rijekom Savom se može ploviti 280 dana godišnje, kada veći vodostaj omogućuje plovidbu plovila sa dubljim gazom
- Od Šamca do Dunava, dužina Save je 304 km
- Povezanost sa plovnim putem dužine 3.500 km od Severnog do Crnog mora
- Drumski putevi i željeznica:
 - ▣ C5 put
 - ▣ Pruga Šamac – luka Ploče (Jadransko more)
- Gradovima Bosne i Hercegovine: Doboj, Zenica, Tuzla, Sarajevo, Mostar, Banja Luka i sa lukom Ploče u Republici Hrvatskoj.

POVRŠINA:

U Federaciji BiH: 168.687 m²
 U Republici Srpskoj: 419.655 m²
 Ukupno: 588.342 m²

- Port of Samac is located on Sava river, between the cities of Zagreb and Belgrade, on the North of Bosnia and Herzegovina
- River Sava is sailable 280 days per year, when larger water level enables sailing of vessels with deeper draft
- The length of Sava between Samac and Danube river is 304 km
- There is a connectedness with the sailing route length 3,500 km from the North to the Black Seas
- The railway roads available:
 - ▣ Route 5C
 - ▣ Railway Samac – Port “Ploče” (Adriatic Sea)
- The route crosses the towns of Bosnia and Herzegovina: Doboj, Zenica, Tuzla, Sarajevo, Mostar, Banja Luka, with port “Ploče” in Republic of Croatia.

AREA SURFACE:

In Federation Bosnia and Herzegovina: 168.687 m²
 In Republic of Srpska: 419.655 m²
 Total: 588.342 m²

Na prostorima svojih skladišta i dokova Luka Šamac raspolaže sa sljedećom opremom za pretovar i uskladištenje raznih vrsta tereta:

- 2 lučka kрана koji podižu teret do 5 tona
- 1 auto-kran koji podiže teret do 150 tona
- Jedan auto-kran koji podiže teret do 35 tona
- Zatvoreno skladište od 3.600 m²
- Skladište na otvorenom prostoru 50.000m²

In the warehouse and docks area Port of Shamac possesses the following equipment for load of cargo:

- 2 port cranes with lift capacity up to 5 tons
- 1 auto-crane with lift capacity up to 150 tons
- 1 auto-crane with lift capacity up to 35 tons
- Roofed warehouse with the area of 3,600 m²
- Open-air warehouse with the area of 50,000 m²



PRIVRŽENOST KVALITETU
COMMITMENT TO QUALITY



CE 1404
1404-CPD-1324

Balkan Steel I.E.



BALKAN
STEEL





www.balkansteelie.com



FRANCE

Est Europa Diffusion - Paris
14, Rue Georges Ville 75116 Paris France
Tel. +33 1 45 00 08 77, +33 1 45 00 91 93
Fax +33 1 45 00 17 39
E-mail: balkansteel@aol.com

GERMANY

Balkan Steel Deutschland GmbH
Augustastrasse 9 D-53173 Bonn, Germany
Tel. +49 228 951 64 31
Fax +49 228 951 64 27
E-mail: zalica@t-online.de

BOSNIA AND HERZEGOVINA

Unis fabrika cijevi a.d. Derventa
Dubicka 50, 74400 Derventa, BiH
Tel.: +387 53 333347, +387 53 333388
Fax: +387 53 333107, +387 53 333402
E-mail: unis@teol.net, www.unis.rs.ba

AD RTC "Luka Samac"

Cara Dusana 2, 76230 Samac, BiH
Tel. +387 54 611150
Fax: +387 54 611608, +387 54 611545
E-mail: lukasamac@teol.net

Balkan Steel I.E. Repres. Office Banja Luka

Aleja Sv. Save br. 7a, Banja Luka, BiH
Tel. +387 51301226
Fax +387 51301227
E-mail: balkansteelbl@blic.net

SERBIA

Balkan steel I.E. repres. office Belgrade
Marije Bursać 40, 11000 Belgrade
Tel. +381 11 2612246
Fax +381 11 2611279
E-mail: blkst@ptt.rs

MACEDONIA

Balkan Metal Co.
Tel./fax +389 23 230464
E-mail: ljubisa.minic@balkanmetal.com.mk
E-mail: marijana.koncelova@balkanmetal.com.mk

RUSSIA

Balkan Steel I.E. Moscow office
123056 g. Moskva, Gruzinskiy per.d.3.off.47
Tel./fax +7 (495)2540338

CZECH REPUBLIC

Balkan Steel s.r.o.
Stepanska 611/14, 110 00 Praha, Czech Republic
Tel./fax +420 222 944 927
E-mail: s.simic@balkansteel.cz